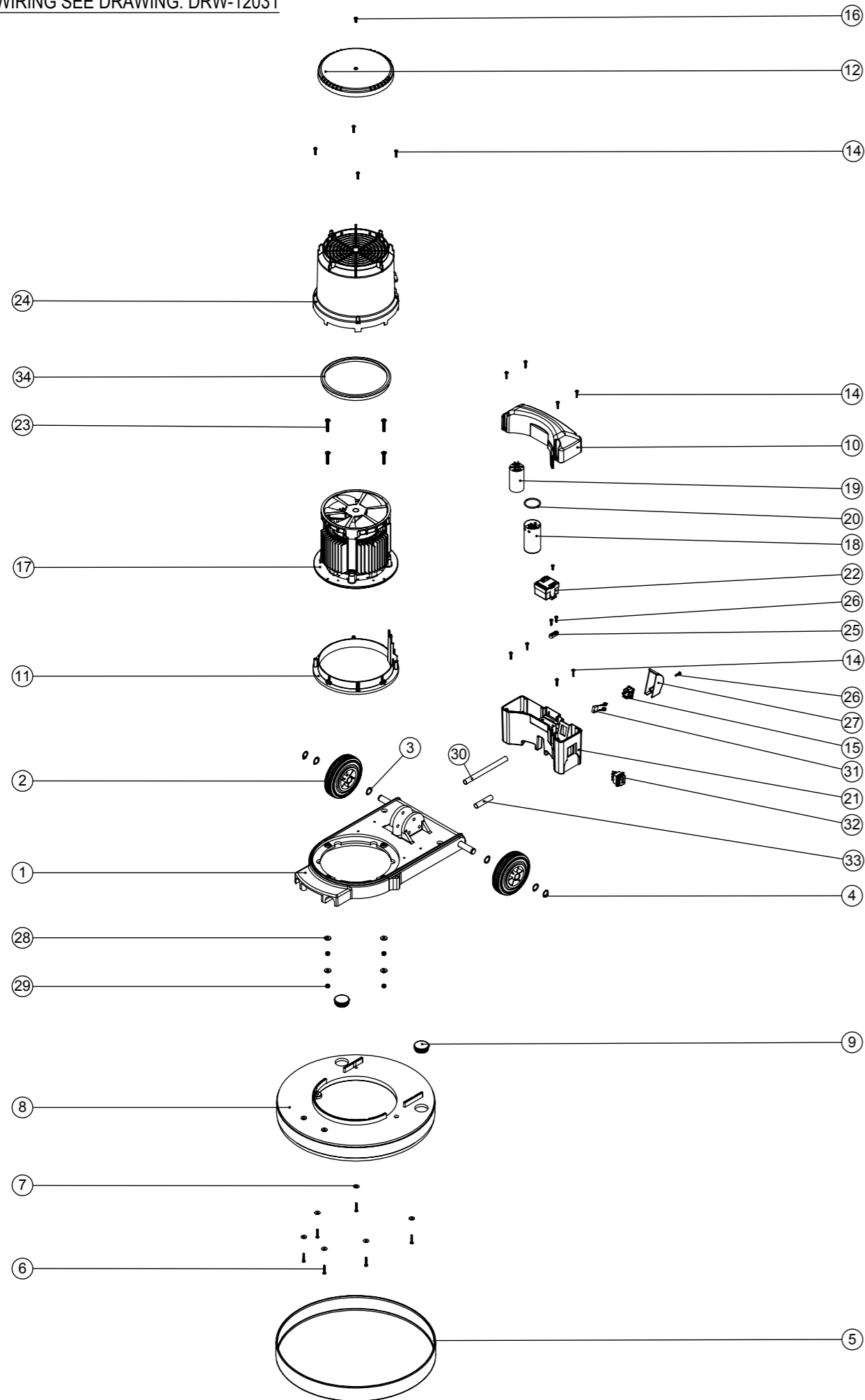


# Numatic International Spare Parts

**Model No:** HFT 1530 EXPLODED DRAWING ASSEMBLY

234895  
DRAWING: DRW-12387 ISS:A01  
06/11/2012

NB: FOR WIRING SEE DRAWING: DRW-12031



**WARNING**  
 Seek guidance from Numatic team before use.  
 Technical information supplied as guidance for use by suitably qualified personnel only.  
 Numatic International Limited accepts no liability for misuse or negligence.

# Numatic International Spare Parts

**Model No:** HFT 1530 EXPLODED DRAWING ASSEMBLY

ITEM NO.	PART NO.	DESCRIPTION	QTY.
1	304260	MULTIDECK BASE MOULDING SUB ASSY	1
2	229060	WHEEL GREY BLACK HUB	2
3	219219	21.5MM X 16.3MM WAVE WASHER	4
4	229051	EXTERNAL CIRCLIP	2
5	206466	LIGHT GREY MEDIUM BUFFER RING (RAL 7042)	1
6	219369	No8 X 1 INCH LONG POZI PAN STAINLESS STEEL PLASTITE SCREW	6
7	219644	M5 FORM G STAINLESS STEEL WASHER	6
8	330010	DECK FOR DUSTROL Y SYSTEM	1
9	229400	BLACK END STOP	2
10	237505	HFM CAPACITOR BOX TOP MOULDING	1
11	237500	BOTTOM SECTION MOULDING	1
12	237503	LID MOULDING (HFM)	1
13	219318	No6 X 1/2 INCH LONG POZI PAN PLASTITE SCREW	1
14	219568	No8 X 3/4 INCH LONG POZI PAN STAINLESS STEEL SCREW	12
15	220584	RENDAR CLIP IN PLUG	1
16	219471	M4 X 12MM LONG POZI PAN SEMS SCREW	1
17	205205	INDUCTION MOTOR 2/4-POLE 1250/1000W 220-240V 50Hz	1
18	205088	MOTOR START CAPACITOR 150MFD 280V C/W RESISTOR AND M8 STUD	1
19	220897	MOTOR RUN CAPACITOR 25 MFD 450V	1
20	208535	O RING 39.5MM ID x 3 DIA	1
21	330083	HFM CAPACITOR BOX BOTTOM MOULDING 2 SPEED	1
22	206824	230V 2 SPEED VOLTAGE RELAY	1
23	219643	M6 X 35MM LONG STAINLESS STEEL POZI PAN SCREW	4
24	330082	HFM MID SECTION MOULDING PRINTED (1500W)	1
25	227008	BLACK CABLE CLAMP	1
26	219914	NO6 X 5/8 INCH LONG POZI-PAN PLASTITE STAINLESS STEEL SCREW	3
27	229213	PLUG COVER	1
28	219647	M6 FORM G STAINLESS STEEL WASHER	4
29	219642	M6 STAINLESS STEEL NYLON INSERT NUT	4
30	330086	MOTOR WIRE SLEEVE	1
31	230136	SUPPRESSOR ASSEMBLY	1
32	229465	DOUBLE POLE CHANGE OVER RED ROCKER SWITCH	1
33	330094	MOTOR SLEEVE (SHORT)	1
34	237412	HFM TOP MOTOR GASKET	1