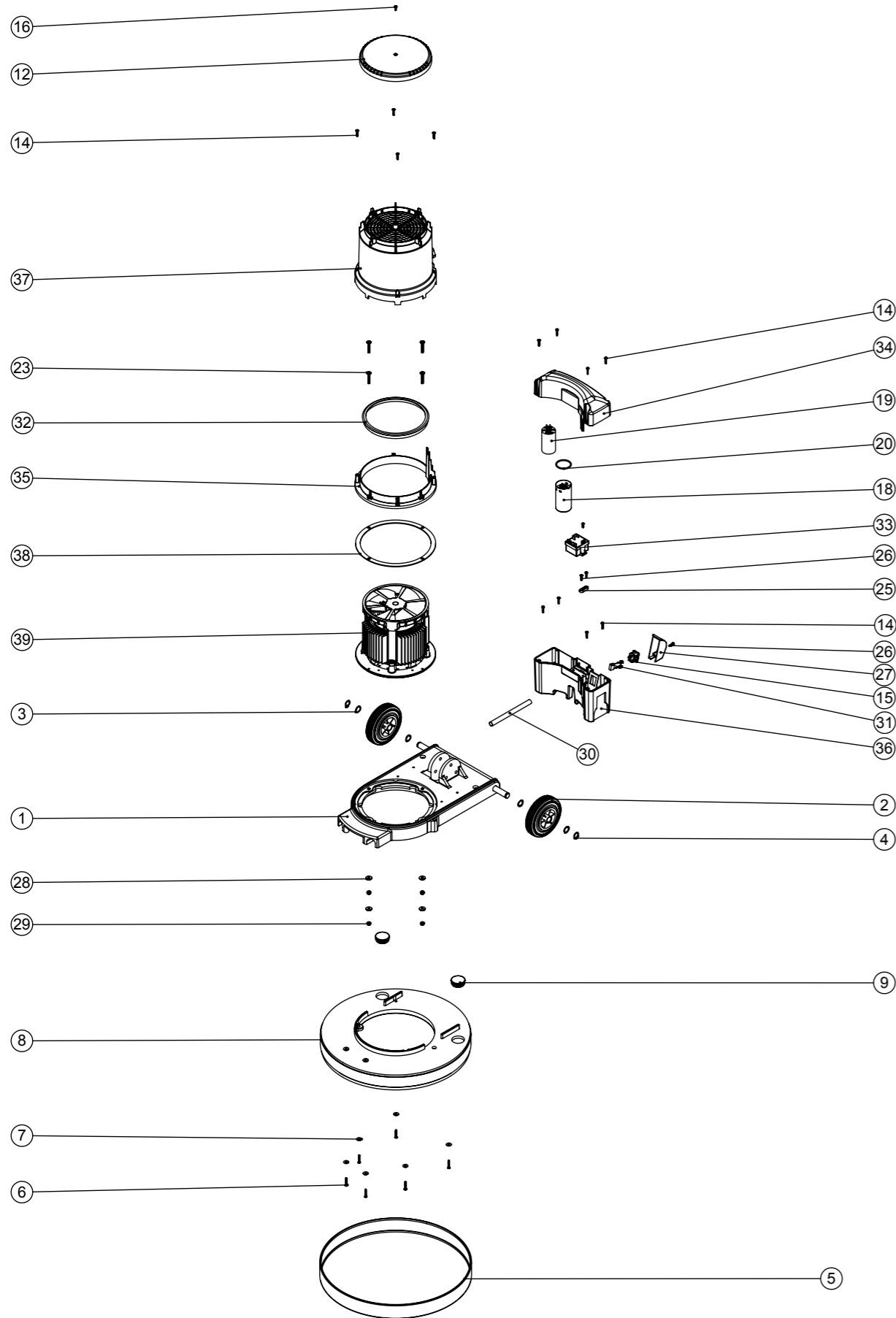


# Numatic International Spare Parts

**Model No:** HFM 1515/1523/1530/1545 EXPLODED DRAWING ASSEMBLY

234894  
DRAWING: DRW-12020 ISS:A11  
09/10/2017

NB: FOR WIRING SEE DRAWING: DRW-11701



# Numatic International Spare Parts

**Model No:** HFM 1515/1523/1530/1545 EXPLODED DRAWING ASSEMBLY

ITEM NO.	PART NO.	DESCRIPTION	Comments	Default/QTY.
1	304260	MULTIDECK BASE MOULDING SUB ASSY	UPDATED, ITEM227557 ADDED	1
2	229060	WHEEL GREY BLACK HUB		2
3	219219	21.5MM X 16.3MM WAVE WASHER		4
4	229051	EXTERNAL CIRCLIP		2
5	206466	LIGHT GREY MEDIUM BUFFER RING (RAL 7042)	G - RANGE USE 206478	1
6	219369	No8 X 1 INCH LONG POZI PAN STAINLESS STEEL PLASTITE SCREW		6
7	219644	M5 FORM G STAINLESS STEEL WASHER		6
8	330010	DECK FOR DUSTROL Y SYSTEM	G - RANGE USE 329072	1
9	229400	BLACK END STOP		2
34	237505	HFM CAPACITOR BOX TOP MOULDING (BLUE)	G - RANGE USE 905782	1
35	237500	BOTTOM SECTION MOULDING (BLUE)	G - RANGE USE 905781	1
12	237503	LID MOULDING (HFM)		1
13	219318	No6 X 1/2 INCH LONG POZI PAN PLASTITE SCREW (Z/PL)		1
14	219568	NO8.3/4 INCH LG.POZI-PAN.SCREW.STAINLESS STEEL.PLASTITE		12
15	220584	RENDAR CLIP IN PLUG		1
16	219471	M4 X 12MM LONG POZI PAN SEMS SCREW		1
18	205088	MOTOR START CAPACITOR 150MFD 280V C/W RESISTOR AND M8 STUD		1
19	220897	MOTOR RUN CAPACITOR 25 MFD 450V		1
20	208534	O RING 39.5MM ID x 3 DIA		1
36	330081	HFM CAPACITOR BOX BOTTOM MOULDING C/W INSERT	G - RANGE USE 905793	1
33	902715	SINGLE SPEED RELAY 230V, RVA6N0D		1
23	219643	M6 X 35MM LONG STAINLESS STEEL POZI PAN SCREW		4
37	330082	HFM MID SECTION MOULDING PRINTED (1500W) (BLUE)	G - RANGE USE 905780	1
25	227008	BLACK CABLE CLAMP		1
26	219914	NO6 X 5/8 INCH LONG POZI-PAN PLASTITE STAINLESS STEEL SCREW		3
27	229213	PLUG COVER		1
28	219647	M6 FORM G STAINLESS STEEL WASHER		4
29	219642	M6 STAINLESS STEEL NYLON INSERT NUT		4
30	330086	MOTOR WIRE SLEEVE		1
31	230136	SUPPRESSOR ASSEMBLY		1
32	237412	HFM TOP MOTOR GASKET		1
38	906405	HFM MOTOR SPLASH GUARD		1
39	205202	INDUCTION MOTOR 4-POLE 1500W 220-240V 50Hz		1