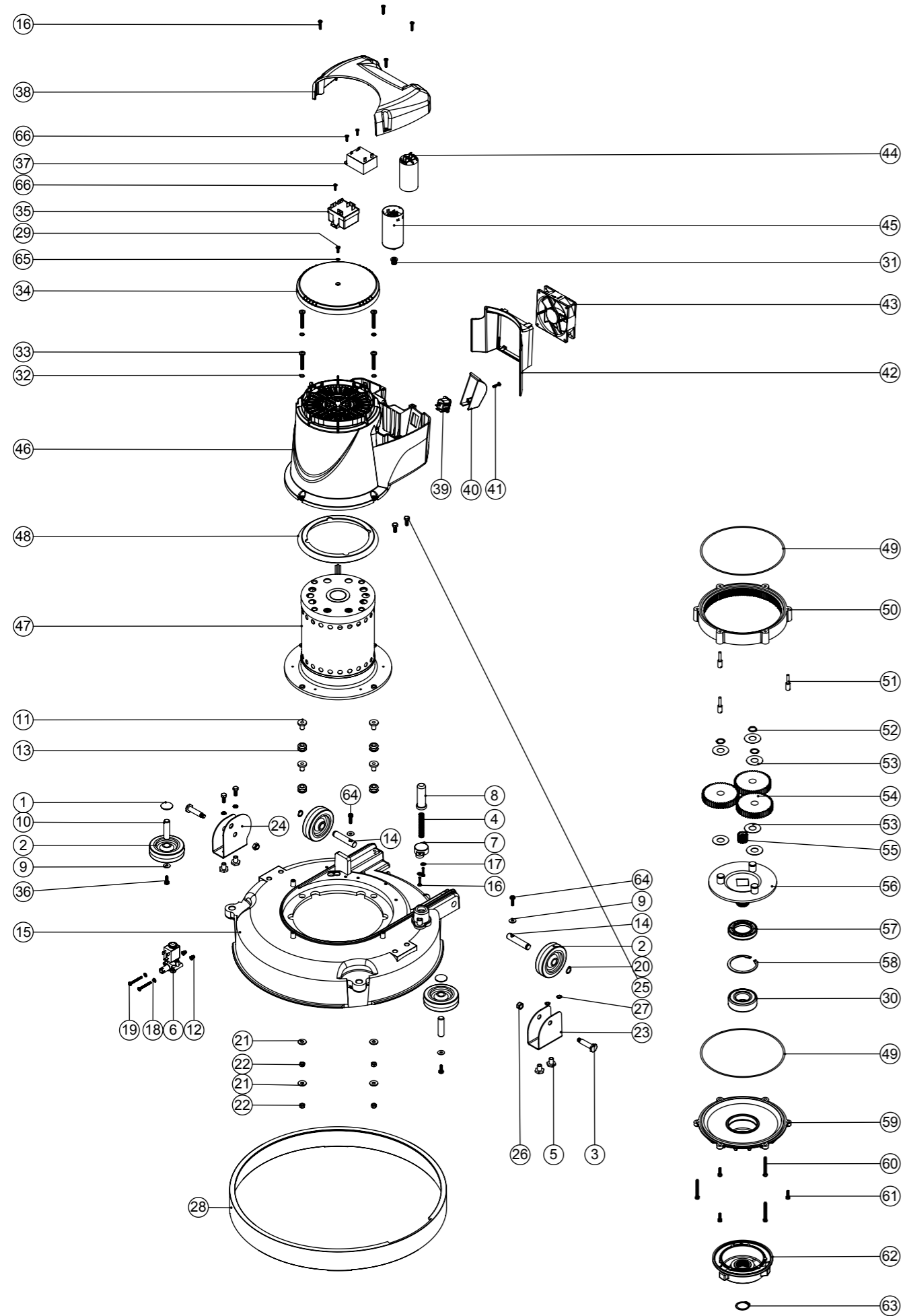


# Numatic International Spare Parts

**Model No:** 450MM MAINS DECK ASSEMBLY EXPLODED DRAWING

234956  
DRAWING: DRW-13427 ISS:A21  
02/03/2017

NB: FOR WIRING SEE DRAWING: DRW-18548, DRW-17307, DRW-17309, DRW-18468, DRW-11855, DRW-12474, DRW-12545



# Numatic International Spare Parts

**Model No:** 450MM MAINS DECK ASSEMBLY EXPLODED DRAWING

ITEM:	PART No:	Description	Comments	QTY.
1	204021	12.7MM STAINLESS STEEL HUB CAP		2
2	204068	3 INCH GREY WHEEL		4
3	206236	PIVOT PIN		2
4	219394	COMPRESSION SPRING		1
5	219606	BRACKET SPACER		4
6	220348	SOLENOID VALVE 240V 50/60HZ		1
	220349	SOLENOID VALVE 220V60HZ		1
	220350	SOLENOID VALVE 110V 50/60HZ		1
7	223242	PLUNGER MOUNTING PLATE MOULDING		1
8	229128	PLUNGER		1
9	219644	M5 FORM G STAINLESS STEEL WASHER		4
10	206013	BUFFER WHEEL PIN		2
11	208011	MOTOR MOUNTING SPACER		4
12	219009	M4 BRASS TAPPEX INSERT		2
13	229025	STANDARD GROMMET		4
14	229382	REAR WHEEL PIN		2
15	229258	TT 345 GRAPHITE BASE MOULDING		1
16	219568	NO8.3/4 INCH LG.POZI-PAN.SCREW.STAINLESS STEEL.PLASTITE		6
17	219355	M5 FORM A STAINLESS STEEL WASHER		2
18	219688	M4 FORM A STAINLESS STEEL WASHER		2
19	219703	M4 X 35MM LONG STAINLESS STEEL POZI PAN SCREW		2
20	219345	12MM EXTERNAL CIRCLIP		2
21	219647	M6 FORM G STAINLESS STEEL WASHER		4
22	219642	M6 STAINLESS STEEL NYLON INSERT NUT		4
23	392249	DECK MOUNT RH		1
24	392248	DECK MOUNT BRACKET		1
25	219719	M6 X 16MM LONG HEXAGONAL STAINLESS STEEL HEAD BOLT		4
26	219639	M8 STAINLESS STEEL NYLON INSERT NUT		2
27	902353	M6 EXTERNAL SHAKEPROOF WASHER STAINLESS STEEL		4
28	229644	450MM DIAMETER SPLASH SKIRT MOULDING		1
29	219890	M4 X 12MM LONG POZI PAN STAINLESS STEEL SCREW		1
30	230094	62MM O/D X 30MM I/D X 20MM BEARING (WITH SEALS)		1
31	219453	M8 MULTISERT		1
32	291060	M6 SHAKEPROOF STAINLESS STEEL WASHER		4
33	219982	M6 X 40MM LONG POZI PAN STAINLESS STEEL SCREW		4
34	229971	CAP MOULDING		1
35	206823	230V SINGLE SPEED VOLTAGE RELAY		1
	206822	110V/120V VOLTAGE RELAY		1
	208416	120V RELAY	NACE MACHINES ONLY	1
36	291132	M5 X 16MM LONG STAINLESS STEEL POZI PAN SEMS SCREW		2
37	206753	UNIVERSAL POWER SUPPLY		1
38	237071	NPR / TT GRAPHITE LID MOULDING		1
39	220584	RENDAR CLIP IN PLUG		1
40	229213	PLUG COVER		1
41	219914	NO6 X 5/8 INCH LONG POZI-PAN PLASTITE STAINLESS STEEL SCREW		1
42	229972	FAN GUARD MOULDING		1
43	205072	PROCESSED 12V DC BRUSHLESS FAN		1
44	220876	20 MFD MOTOR RUN CAPACITOR (450V)	220V & 230V MACHINES	1
	208211	80uF MOTOR RUN CAPACITOR	120V MACHINES	1
	208219	70uF RUN CAPACITOR	110V MACHINES	1
45	208265	MOTOR START CAPACITOR 98 MFD	220V & 230V MACHINES	1
	208210	MOTOR START CAPACITOR 480 MFD C/W RESISTOR & M8 STUD	110V & 120V MACHINES	1
46	328132	GRAPHITE MOTOR COWL MOULDING PRINTED	PRINTED NUMATIC	1
	330008	TWINTTEC MAINS MOTOR COWL MOULDING (GRAPHITE) (NO LOGO)	NO PRINT	1
47	205217	COMBINED INDUCTION MOTOR 4POLE 220-240V 50Hz		1
	205219	COMBINED INDUCTION MOTOR 4POLE 220V 60Hz		1
	205220	COMBINED INDUCTION MOTOR 4POLE 120V 60Hz		1
	205221	COMBINED INDUCTION MOTOR 4POLE 110V 50Hz		1
48	227556	TOP MOTOR GASKET		1
49	230001	V OIL SEAL		2
50	214115	GEAR BOX MID SECTION		1
51	208207	GEARBOX FASTENER WITH SLOT		3
52	230015	15MM EXTERNAL CIRCLIP		3
53	230215	35MM X 15 I/D ALUMINIUM WASHER		6
54	230013	48 TOOTH SPUR GEAR(STANDARD SPEED 50/60HZ)		3
55	230027	12 TOOTH PINION GEAR (STANDARD SPEED)		1
56	230291	PLANET CARRIER & PIN ASSEMBLY (50HZ STANDARD SPEED)		1
57	230158	VITON OIL SEAL (BROWN)		1
58	230200	62MM INTERNAL CIRCLIP		1
59	230208	DIE CAST BOTTOM PLATE ASSY	INCLUDE: 57, 58, 30	1
60	219706	M5 X 45MM LONG STAINLESS STEEL HEXAGONAL BOLT		3
61	219904	M5 X16MM LONG HEXAGONAL STAINLESS STEEL BOLT		3
62	230207	DIE CAST CHUCK MACHINED		1
63	230048	26MM EXTERNAL CIRCLIP		1
64	291133	M5 X 20MM LONG STAINLESS STEEL POZI PAN SEMS SCREW		2
65	291145	M4 SHAKEPROOF WASHER STAINLESS STEEL		1
66	291061	No6 X 1/2 INCH LONG POZI PAN PLASTITE SCREW (STAINLESS STEEL)		3