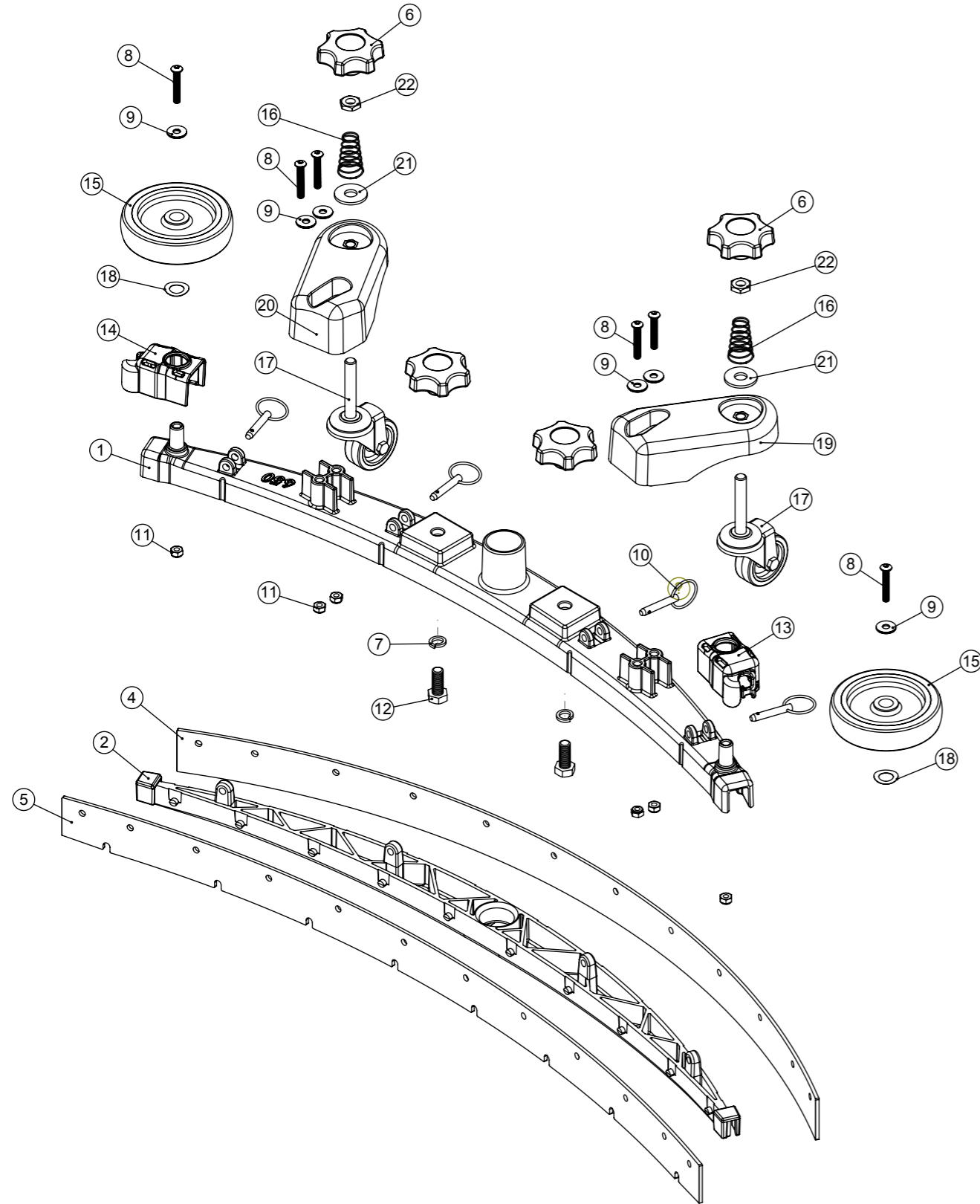


Numatic International Spare Parts

Model No: 650 TWINTEC ALUMINIUM FLOOR TOOL (38MM HOSE, RED TRIM, SERILOR BLADES)

Internal Code: 903347
 DRAWING: DRW-22621 ISS:A09
 PRO 27/03/2018

NB: FOR WIRING SEE DRAWING: N/A



Numatic International Spare Parts

Model No: 650 TWINTEC ALUMINIUM FLOOR TOOL (38MM HOSE, RED TRIM, SERILOR BLADES)

| ITEM: | PART No: | Description | Qty |
|-------|----------|---|-----|
| 1 | 208198 | (650MM SCRUB WIDTH) ALUMINIUM SQUEEGEE CASTING (38MM HOSE FITTING) | 1 |
| 2 | 903345 | (650MM SCRUB WIDTH) RED BLADE HOLDER MOULDING (SLOPING PROFILE) (32MM & 38MM HOSE FITTING) | 1 |
| | 900518 | 650 REPLACEMENT SERILOR GREEN POLYURETHANE BLADES SET | |
| 4 | 208970 | (650MM SCRUB WIDTH) REPLACEMENT (4.0MM / 35-45-35 SHORE A) REAR LAMINATED SERILOR POLY/BLADE (847MM LONG) | 1 |
| 5 | 208967 | (650MM SCRUB WIDTH) REPLACEMENT (3.2MM / 40 SHORE A) FRONT MONOLAYER SERILOR POLY/BLADE (819MM LONG) | 1 |
| 6 | 903281 | M10 LOBE KNOB (RED) | 4 |
| 7 | 219899 | M10 SINGLE COIL STAINLESS STEEL WASHER | 2 |
| 8 | 219933 | M6 X 35MM SOCKET BUTTON HEAD BOLT STAINLESS STEEL | 6 |
| 9 | 219647 | M6 FORM G STAINLESS STEEL WASHER | 6 |
| 10 | 206953 | DETENT PINS | 4 |
| 11 | 219642 | M6 STAINLESS STEEL NYLON INSERT NUT | 6 |
| 12 | 219909 | M10 X 25MM LONG HEXAGONAL STAINLESS STEEL SCREW | 2 |
| 13 | 237322 | RIGHT HAND FLOOR TOOL CLIP MOULDING | 1 |
| 14 | 237323 | LEFT HAND FLOOR TOOL CLIP MOULDING | 1 |
| 15 | 208796 | 4 INCH WHEEL | 2 |
| 16 | 229175 | CONICAL SPRING | 2 |
| 17 | 907759 | 50MM DIAMETER GREY TPR TYRED SWIVEL CASTOR C/W M10 X 60 SWAGED STEM. | 2 |
| 18 | 219891 | 13MM WAVEY WASHER | 2 |
| 19 | 906860 | ADJUSTABLE FLOOR TOOL CASTOR PLASTIC PLATE LEFT | 1 |
| 20 | 906859 | ADJUSTABLE FLOOR TOOL CASTOR PLASTIC PLATE RIGHT | 1 |
| 21 | 291124 | M10 PENNY WASHER STAINLESS STEEL | 2 |
| 22 | 219951 | A4 (STAINLESS STEEL) M10 HEX LOCK NUT (HALF NUT) | 2 |