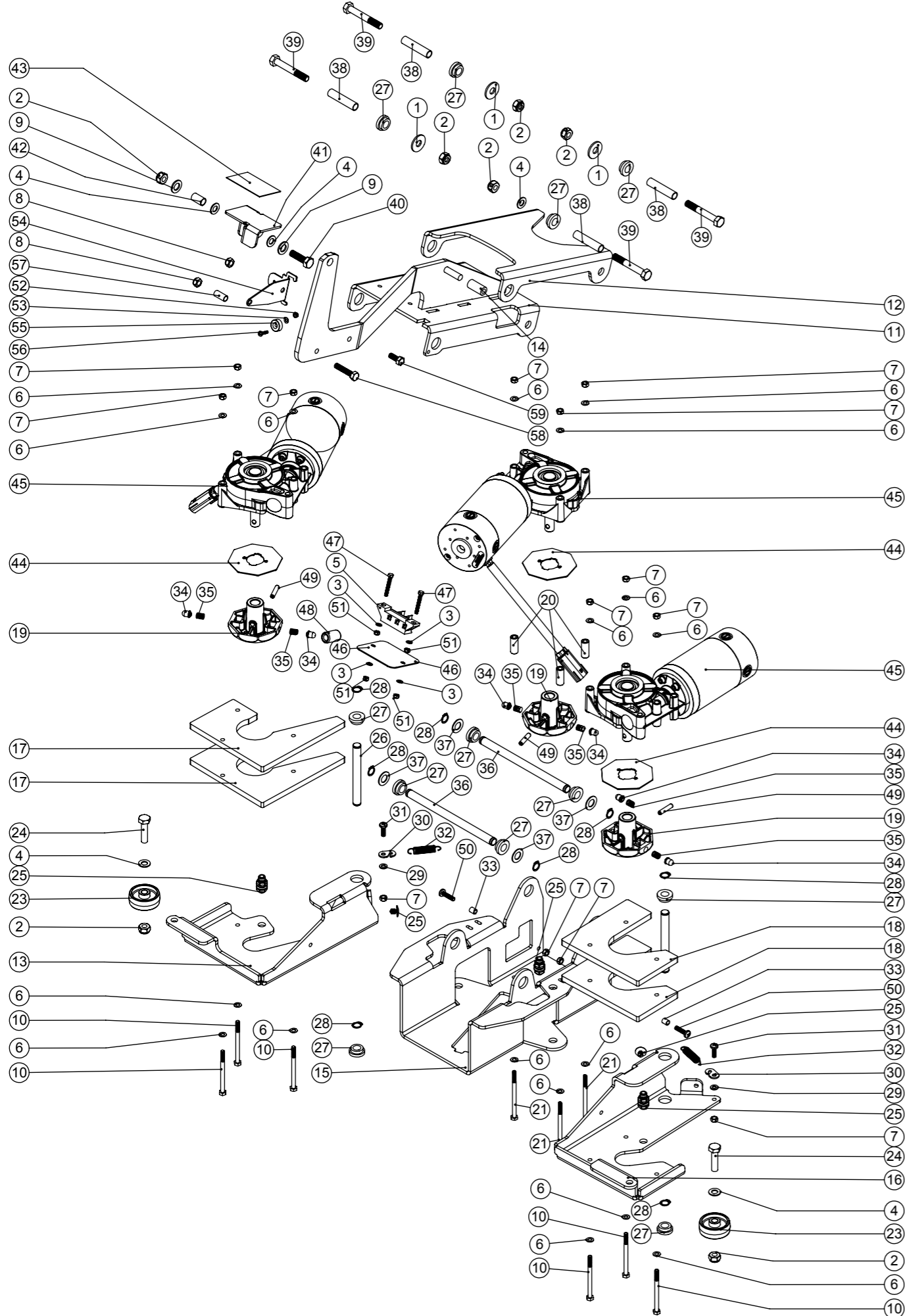


# Numatic International Spare Parts

**Model No:** TTV678 BRUSH DECK / LIFTING LINK / CHUCK ASSEMBLY  
EXPLODED DRAWING

NB: FOR WIRING SEE DRAWING: WD-0359, DRW-15631

Internal Code: 905582  
DRAWING: DRW-24931 ISS:A14  
21/03/2018



# Numatic International Spare Parts

**Model No:** TTV678 BRUSH DECK / LIFTING LINK / CHUCK ASSEMBLY  
EXPLODED DRAWING

ITEM	PART NO.	DESCRIPTION	COMMENTS	QTY.
1	291124	M10 PENNY WASHER STAINLESS STEEL		3
2	219897	M10 STAINLESS STEEL NYLON INSERT NUT		7
3	219355	M5 FORM A STAINLESS STEEL WASHER	MODELS BUILT BEFORE 03/2014	4
4	219903	M10 FORM A STAINLESS STEEL WASHER		5
5	206788	TERMINAL BLOCK	MODELS BUILT BEFORE 03/2014	1
6	219560	M6 FORM B STAINLESS STEEL WASHER		18
7	219983	M6 NYLOC STAINLESS STEEL FULL NUT		13
8	219639	M8 STAINLESS STEEL NYLON INSERT NUT		2
9	219911	PLASTIC WASHER		2
10	219915	M6 X 80MM LONG STAINLESS STEEL HEXAGONAL HEAD BOLT		6
11	404044	BRUSH DECK PEDAL ARM WELDED ASSEMBLY - PAINTED SILVER GREY		1
12	404045	BRUSH DECK REAR LINK - PAINTED SILVER GREY		1
13	303803	WELDED BRUSH DECK RIGHT PIVOT PAINTED SILVER GREY		1
14	391211	SILICON TUBE 30MM LONG X 8MM I/D X 3.2MM WALL SECTION		1
15	329816	BRUSH DECK CENTRE PIVOT PAINTED SILVER GREY		1
16	303802	WELDED BRUSH DECK LEFT PIVOT PAINTED SILVER GREY		1
17	404037	RIDE-ON RH BRUSH DECK WEIGHT PAINTED SILVER GREY		2
18	404036	LEFTHAND BRUSH DECK WEIGHT (PAINTED SILVER GREY)		2
19	206966	CHUCK CASTING	SPARE PART: 303809 INCLUDING: 22,42,43,54,59	3
20	206851	MOTOR MOUNTING SPACER		3
21	291021	M6 X 90MM LONG STAINLESS STEEL HEXAGONAL HEAD BOLT		3
25	208024	PUSH IN BARBED FASTENER		2
23	206712	50MM DIAMETER BLACK WHEEL		2
24	903430	M10 X 40MM LONG HEXAGONAL STAINLESS STEEL SCREW		2
25	208032	6MM BULKHEAD CONNECTOR		3
26	206981	BRUSH DECK PIVOT PIN		2
27	208058	SHOULDERED BUSH - Ø12.9MM I/D		12
28	905563	13MM EXTERNAL CIRCLIP ST/ST		8
29	219493	M6 NYLON WASHER		2
30	329920	BRUSH DECK SPRING PIVOT BRACKET		2
31	219701	M6 X 20MM LONG POZI PAN STAINLESS STEEL SCREW		2
32	208050	BRUSH DECK ROTATION SPRING		2
33	219843	6MM I/D X 9.5MM LONG SPIROL SPACER (STAINLESS STEEL)		2
34	208135	CHUCK DOME		6
35	206957	DRIVE SYSTEM SPRING		6
36	206980	PIVOT TUBE		2
37	219302	M12 FORM B STAINLESS STEEL WASHER		4
38	391194	PIVOT TUBE A		4
39	904945	M10 X 70MM LONG HEX BOLT STAINLESS STEEL		4
40	219895	M10 X 35MM LONG HEXAGONAL STAINLESS STEEL SCREW		1
41	329807	FOOT PEDAL HINGE BRACKET		1
42	303811	12.7MM DIAMETER X 18G X 20MM LONG STAINLESS STEEL TUBE		1
43	904204	FOOT PEDAL GRIP PAD RED	BLACK VERSION 391221	1
44	392331	OCTO CHUCK PLASTIC COVER		3
45	205263	24V DC BRUSH DRIVE PM90 MOTOR/GEARBOX ASSEMBLY (14:1 RATIO) C/W WATERPROOF CONNECTOR		3
46	329922	BRUSH DECK TERMINAL SPLASH GAURD	MODELS BUILT BEFORE 03/2014	1
47	905554	M5 X 35MM LONG HEXAGONAL HEAD SCREW ST/ST	MODELS BUILT BEFORE 03/2014	2
48	230097	AXIAL FERRITE BEAD 17.5 X 9.5 X 28.5 (REF 742 700 9)	MODELS BUILT BEFORE 03/2014	1
49	291079	6MM X 30MM STAINLESS STEEL ROLL PIN		3
50	902232	M6 X 25MM LONG POZI PAN SCREW STAINLESS STEEL		2
51	291035	M5 NYLON INSERT NUT (STAINLESS STEEL)		4
52	219687	M4 STAINLESS STEEL NYLON INSERT NUT		1
53	219688	M4 FORM A STAINLESS STEEL WASHER		1
54	907246	MAGNET PEDAL ARM BRACKET		1
55	208382	MAGNET(19MM O/D)		1
56	219862	M4 X 16MM LONG POZI PAN STAINLESS STEEL SCREW		1
57	906651	SPACER (S/S 10MM O/D 8MM I/D X 22MM LONG)		1
58	291112	M8 X 40 LONG HEX BOLT STAINLESS STEEL		1
59	219717	M8 X 20MM LONG HEXAGONAL STAINLESS STEEL BOLT		1