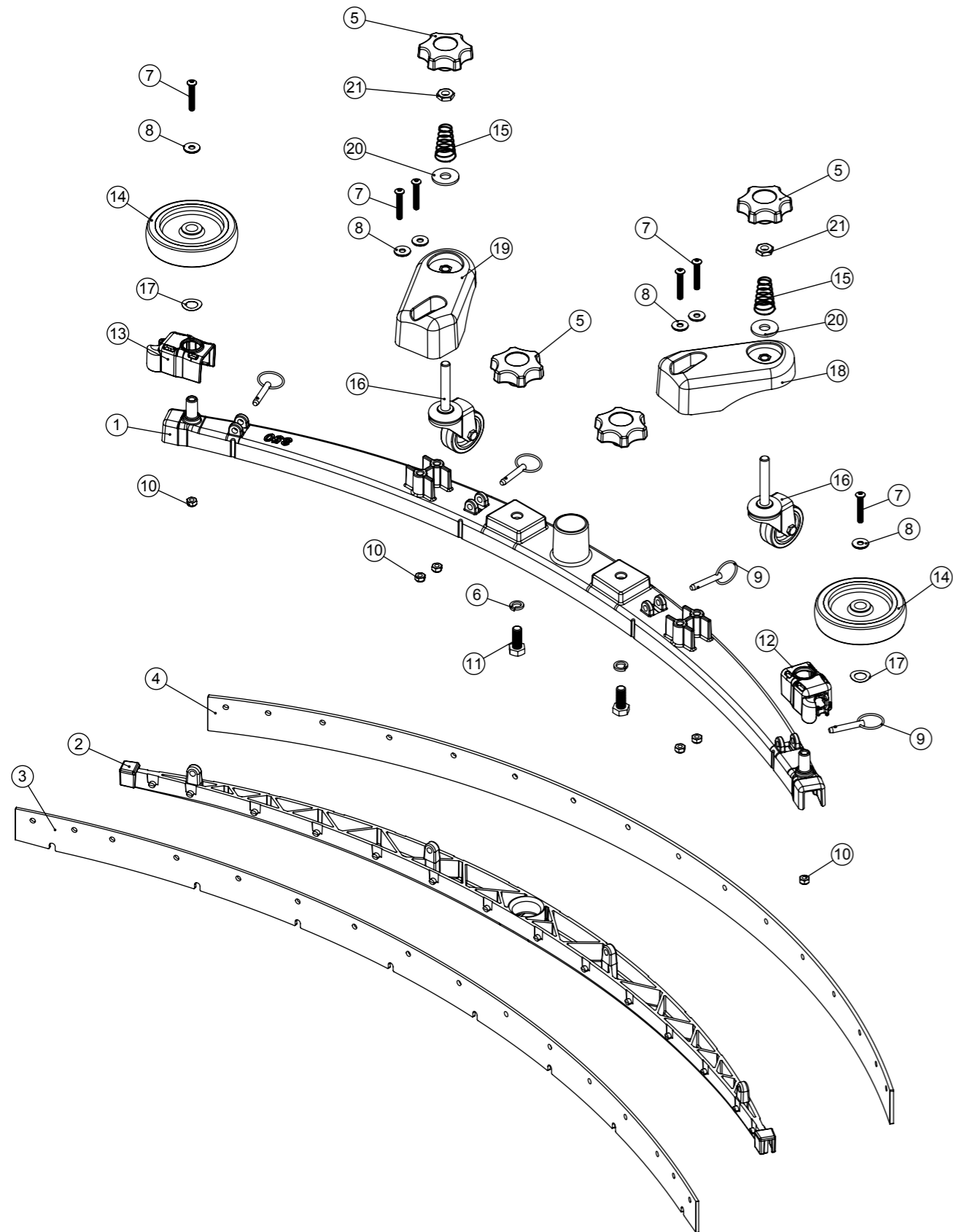


# Numatic International Spare Parts

**Model No:** 850 TWINTEC ALUMINIUM FLOOR TOOL (38MM HOSE)

Internal Code: 599443 900481 900481 900481  
 DRAWING: DRW-18079 ISS:A06  
 PRO 27/03/2018

NB: FOR WIRING SEE DRAWING: N/A



# Numatic International Spare Parts

**Model No:** 850 TWINTEC ALUMINIUM FLOOR TOOL (38MM HOSE)

| ITEM: | PART No:  | DESCRIPTION   | QTY. |
|-------|-----------|---|------|
| 1     | 208197    | (850MM SCRUB WIDTH) ALUMINIUM SQUEEGEE CASTING (38MM HOSE FITTING)                                    | 1    |
| 2     | 229988    | (850MM SCRUB WIDTH) BLADE HOLDER MOULDING (SLOPING PROFILE) (32MM & 38MM HOSE FITTING)                | 1    |
| 3     | SEE TABLE | (850MM SCRUB WIDTH) REPLACEMENT (3.2MM / 40 SHORE A) FRONT MONOLAYER SERILOR POLY/BLADE (1085MM LONG) | 1    |
| 4     | SEE TABLE | 850MM SCRUB WIDTH REPLACEMENT REAR BLADE (1117MM LONG)  | 1    |
| 5     | 903281    | M10 LOBE KNOB (RED)   | 4    |
| 6     | 219899    | M10 SINGLE COIL STAINLESS STEEL WASHER  | 2    |
| 7     | 219933    | M6 X 35MM SOCKET BUTTON HEAD BOLT STAINLESS STEEL   | 6    |
| 8     | 219647    | M6 FORM G STAINLESS STEEL WASHER  | 6    |
| 9     | 206953    | DETENT PINS   | 4    |
| 10    | 219642    | M6 STAINLESS STEEL NYLON INSERT NUT   | 6    |
| 11    | 219909    | M10 X 25MM LONG HEXAGONAL STAINLESS STEEL SCREW   | 2    |
| 12    | 237322    | RIGHT HAND FLOOR TOOL CLIP MOULDING   | 1    |
| 13    | 237323    | LEFT HAND FLOOR TOOL CLIP MOULDING  | 1    |
| 14    | 208796    | 4 INCH WHEEL  | 2    |
| 15    | 229175    | CONICAL SPRING  | 2    |
| 16    | 907759    | 50MM DIAMETER GREY TPR TYRED SWIVEL CASTOR C/W M10 X 60 SWAGED STEM.                                  | 2    |
| 17    | 219891    | 13MM WAVEY WASHER   | 2    |
| 18    | 906860    | ADJUSTABLE FLOOR TOOL CASTOR PLASTIC PLATE LEFT   | 1    |
| 19    | 906859    | ADJUSTABLE FLOOR TOOL CASTOR PLASTIC PLATE RIGHT  | 1    |
| 20    | 291124    | M10 PENNY WASHER STAINLESS STEEL  | 2    |
| 21    | 219951    | A4 (STAINLESS STEEL) M10 HEX LOCK NUT (HALF NUT)  | 2    |

| BLADE  | FRONT  | REAR   |
|--|--------|--------|
| POLYURETHANE 43 SHORE A  | 206949 | 206950 |
| POLYURETHANE 50 SHORE A  | 208193 | 208195 |
| LINATEX NATURAL RUBBER 40 SHORE A  | 208194 | 208196 |
| SERILOR®CLEAN POLYURETHANE<br>FRONT: 40 SHORE A / REAR: 35-45-35 SHORE A | 208969 | 208972 |