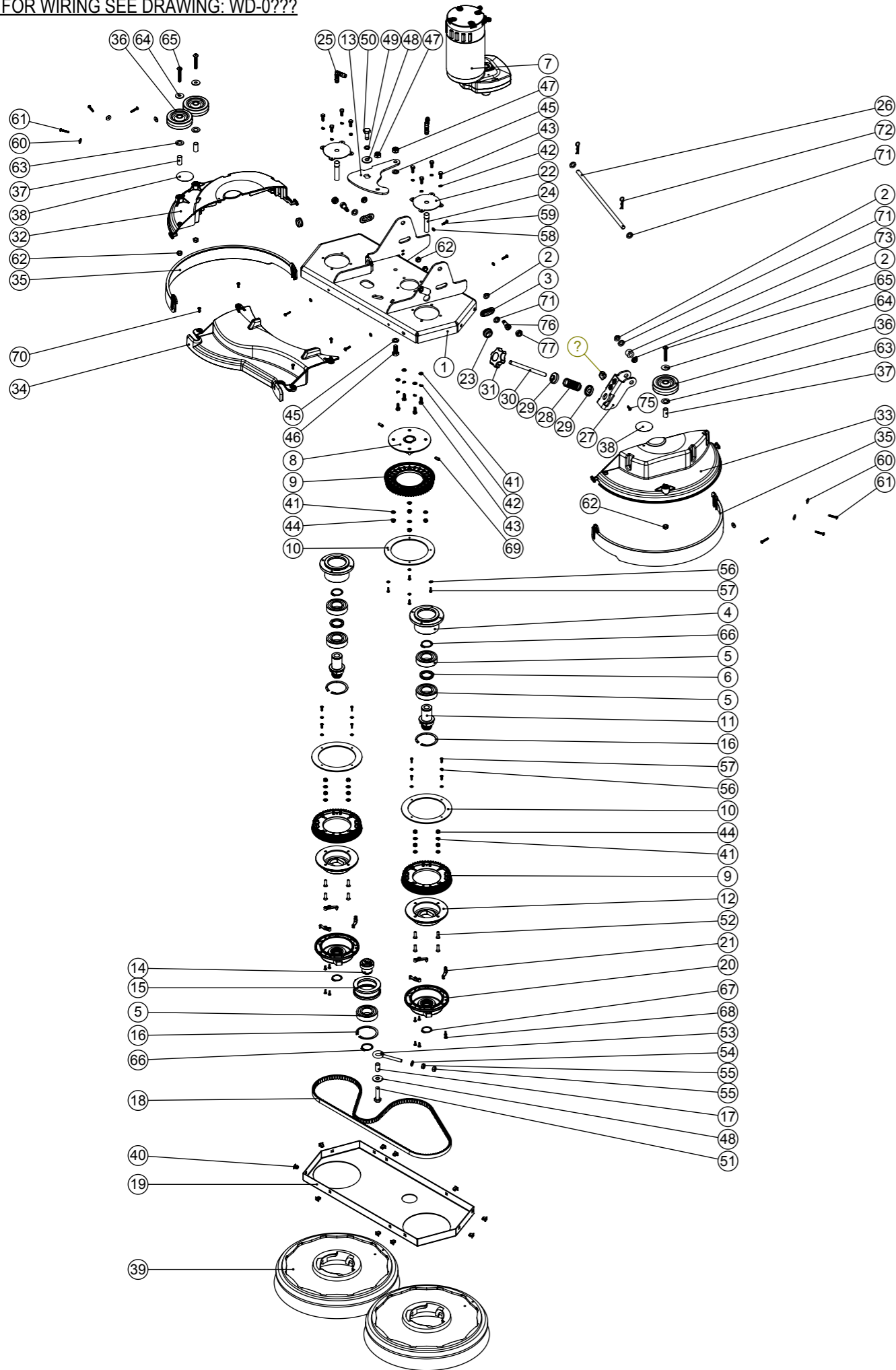


Numatic International Spare Parts

Model No: TWIN BRUSH DECK ASSY

NB: FOR WIRING SEE DRAWING: WD-0???

Internal Code: 905419
 DRAWING: DRW-23622 ISS:A08
 PRO 18/10/2018



Numatic International Spare Parts

Model No: TWIN BRUSH DECK ASSY

ITEM:	PART No:	DESCRIPTION	QTY.
1	905338	TWIN BRUSH DECK WELD ASSY ZINC PLATED	1
2	208330	IGUS BEARING (GFM 101206)	4
3	237162	SLIDER BUSH	2
4	903420	BEARING HOUSING	2
5	208878	BEARING I/D30MM O/D62MM	5
6	903439	SPACER O/D 40MM X I/D 30MM X 5MM	2
7	205192	MRP6 IP20 AMER MOTOR	1
8	904836	BRUSH MOTOR PULLEY PLATE WELD ASSY ZINC PLATED	1
9	237680	LARGE PULLEY 56TH	3
10	903423	PULLEY FLANGE PLATE	3
11	903421	BRUSH PULLEY SHAFT	2
12	903440	PULLEY MOUNTING ADAPTER	2
13	903619	TENSIONER PIVOT PLATE ZINC PLATED	1
14	903419	TENSIONER SHAFT	1
15	903424	IDLER	1
16	230200	62MM INTERNAL CIRCLIP	3
17	903429	1/2 INCH DIA X 18G S/S TUBE (0.022)	1
18	903438	BELT (GATES GT3 - 1440 - 8MGT - 12)	1
19	903428	TWIN BRUSH DECK - MAIN PLATE COVER	1
20	230285	MODIFIED CHUCK (CRO)	2
21	237730	SPRING CLIP	6
22	903432	TWIN BRUSH WATER FEED PLATE	2
23	208143	20MM GROMMET X 6MM PANEL THICKNESS	2
24	903446	MOTOR SHAFT INSERT	2
25	903641	10MM HOSETAIL ELBOW	2
26	905317	PIVOT ROD	1
27	905398	BRUSH DECK PITCH ADJUSTER ZINC PLATED	1
28	208721	COMPRESSION SPRING	1
29	905319	SPRING RETAINER MOULDING MODIFIED	2
30	905316	M10 X 140MM LONG STAINLESS STEEL THREADED BAR	1
31	903281	M10 LOBE KNOB (RED)	1
32	903433	TWIN BRUSH RH DECK MOULDING	1
33	903434	TWIN BRUSH LH DECK MOULDING	1
34	905071	TWIN BRUSH CENTRE DECK MOULDING	1
35	903437	TWIN BRUSH DECK SPLASH SKIRT	2
36	204068	3 INCH GREY WHEEL	3
37	391224	1/2 INCH DIA X 18G S/S TUBE (0.026)	3
38	903845	DO NOT STAND HERE WARNING LABEL Ø50MM	2
39	903449	370MM POLYSCRUB BRUSH	2
40	900986	NYLON GROMMET NUT (PLASTIC INSERT TO SUIT No 8 PLASTITE SCREW)	10
41	219870	M6 FORM A WASHER STAINLESS STEEL	16
42	219718	WASHER.M6.SPRING.STAINLESS STEEL	12
43	219719	M6 X 16MM LONG HEXAGONAL STAINLESS STEEL HEAD BOLT	12
44	219642	M6 STAINLESS STEEL NYLON INSERT NUT	12
45	219903	M10 FORM A STAINLESS STEEL WASHER	2
46	219909	M10 X 25MM LONG HEXAGONAL STAINLESS STEEL SCREW	1
47	219897	M10 STAINLESS STEEL NYLON INSERT NUT	2
48	291124	M10 PENNY WASHER STAINLESS STEEL	2
49	219899	M10 SINGLE COIL STAINLESS STEEL WASHER	1
50	291141	M10 X 25MM LG HEX HEAD SCREW STAINLESS STEEL C/W THREADLOCK	1
51	903430	M10 X 40MM LONG HEXAGONAL STAINLESS STEEL SCREW	1
52	903441	M6 X 20MM LONG STAINLESS STEEL COUNTERSUNK POZI SCREW	8
53	903422	M8 X 80MM EYE BOLT ZINC PLATED	1
54	219578	M8 FORM A STAINLESS STEEL WASHER	1
55	219079	M8 PLAIN NUT	2
56	219688	M4 FORM A STAINLESS STEEL WASHER	12
57	291061	No6 X 1/2 INCH LONG POZI PAN PLASTITE SCREW (STAINLESS STEEL)	12
58	219355	M5 FORM A STAINLESS STEEL WASHER	4
59	219568	NO8.3/4 INCH LG.POZI-PAN.SCREW.STAINLESS STEEL.PLASTITE	4
60	219644	M5 FORM G STAINLESS STEEL WASHER	6
61	219369	No8 X 1 INCH LONG POZI PAN STAINLESS STEEL PLASTITE SCREW	6
62	219639	M8 STAINLESS STEEL NYLON INSERT NUT	5
63	219302	M12 FORM B STAINLESS STEEL WASHER	3
64	219716	M8 FORM G STAINLESS STEEL WASHER	3
65	219822	M8 X 45MM LONG SOCKET BUTTON STAINLESS STEEL HEAD BOLT	3
66	903435	30MM EXTERNAL CIRCLIP	3
67	230048	26MM EXTERNAL CIRCLIP	2
68	219683	No6 X 3/8 INCH LONG POZI PAN BLACK COUNTERSUNK PLASTITE SCREW	12
69	291139	6MM X 16MM STAINLESS STEEL ROLL PIN	2
70	219569	No8 X 1/2 INCH LONG POZI PAN STAINLESS STEEL PLASTITE SCREW	4
71	219964	NYLON WASHER (18MM O/D X 10.4MM I/D X 3MM THICK)	5
72	291102	SMALL R PIN (S MASTERS 89100 SS)	2
73	905320	NYLON SPACER ID 10.2MM X OD 20MM X LENGTH 15MM	1
74	903644	CRO LIFTING MECH CAM	1
75	219370	No8 X 5/8 INCH LONG PLASTITE STAINLESS STEEL SCREW	1
76	208332	M8 X 10 X 16MM LONG HEX SOCKET SHOULDER BOLT	2
77	237632	SHOULDER BOLT COVER	2