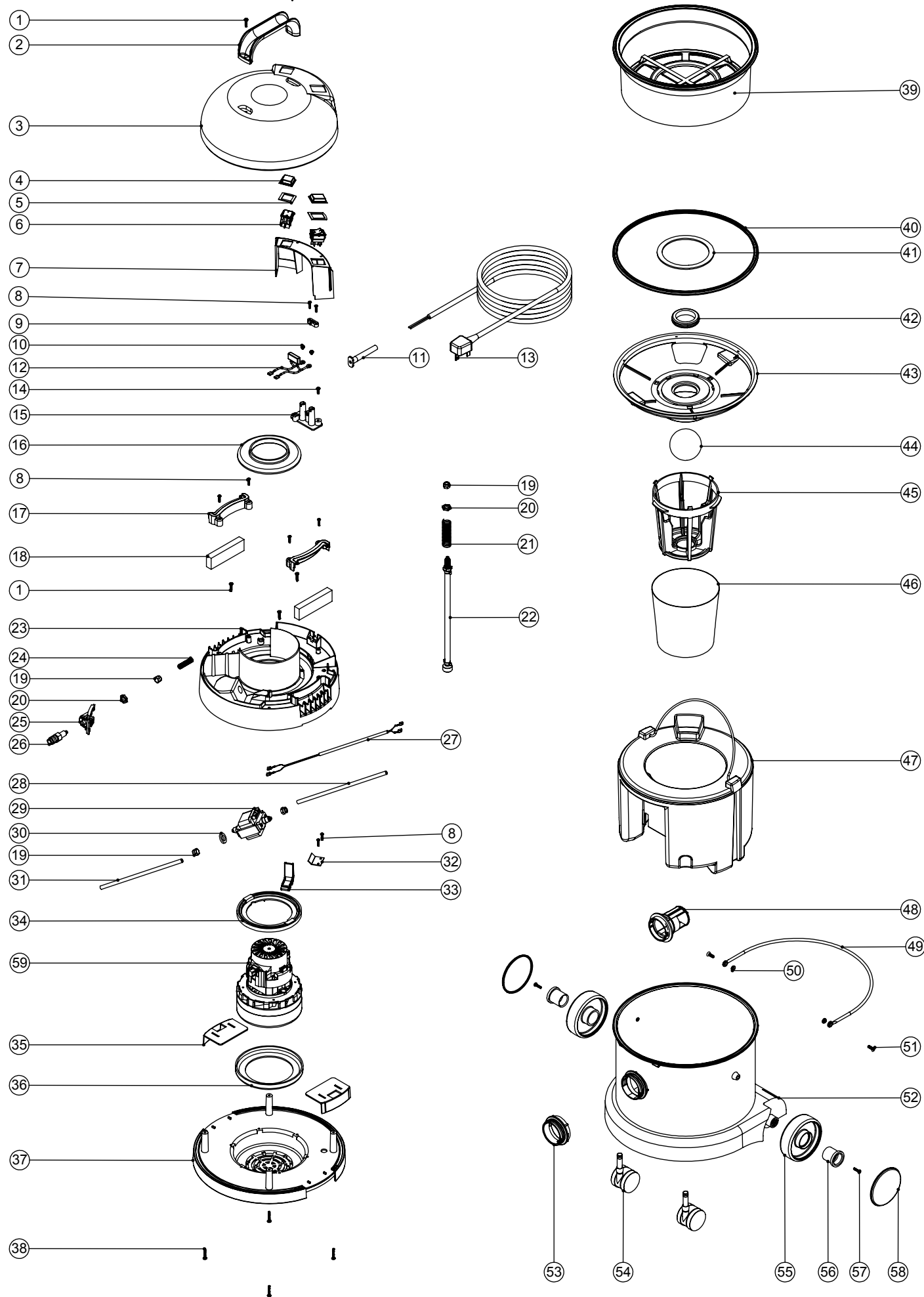


Numatic International Spare Parts

Model No: CT370-2 EXPLODED DRAWING

234357
DRAWING: EXP-0788 ISS:A03
07/03/2011

NB: FOR WIRING SEE DRAWING: WD-0238



Numatic International Spare Parts

Model No: CT370-2 EXPLODED DRAWING

POS	ITEM NO:	DESCRIPTION	COMMENTS
1	219041	No8 X 3/4 INCH LONG POZI PAN SCREW	
2	206451	HANDLE	
3	227920	SWITCH COVER TOP	
4	206573	SWITCH COVER (PLUG HANDLE)	
5	291015	SWITCH GASKET - WV/CT	
6	220843	BLUE ROCKER SWITCH	
7			
8	219107	No6 X 5/8 INCH LONG POZI PAN PLASTITE SCREW	
9	227008	BLACK CABLE CLAMP	
10	219090	M4 X 8MM LONG POZI PAN SEMS SCREW	
11	220923	STRESS RELIEF	
12	220698	SUPPRESSOR ASSEMBLY	
13	236033	10.0M X 1.00MM X 2 CORE CABLE (UK PLUG)	
	236034	10.0M X 1.00MM X 2 CORE CABLE (EURO PLUG)	
	236047	10.0M X 1.00MM X 2 CORE CABLE (SWISS PLUG)	
	236036	10.0M X 1.00MM X 2 CORE CABLE (SOUTH AFRICAN PLUG)	
	236044	10.0M X 1.00MM X 2 CORE CABLE (AUSTRALIAN PLUG)	
	236049	10.0M X 1.00MM X 2 CORE CABLE (INDUSTRIAL PLUG)	
14	219101	No8 X 1/2 INCH LONG POZI PAN PLASTITE SCREW	
15	220472	TERMINAL BLOCK MOULD + INSERTS	
16	227926	AIR SEPERATOR	
17	237184	SPLASH PAD RETAINER - WV/CT	
18	291014	SPLASH PAD - WV/CT	
19	219299	BLOCKING NUT	
20	219337	LOCKNUT	
21	219327	80MM LG COMPRESSION SPRING	
22	303018	260MM LONG SOLUTION TUBE	
23	325506	PROCESSED TOP MOTOR HOUSING (PRINTED GREY NUMATIC)	
24	219281	TUBE SPRING	
25	270167	QUICK RELEASE MOUNTING BRACKET	
26	216296	QUICK RELEASE BULK HEAD FITTING	
27	321666	DIODE ASSEMBLY	
28	227995	235MM LONG SOLUTION TUBE	
29	216147	PUMP SMALL BORE 220/240V/50HZ	
	216146	PUMP SMALL BORE 110V/60HZ	
30	206208	SEALING WASHER	
31	227814	215MM LONG SOLUTION TUBE	
32	303022	PUMP FIXING BRACKET	
33	227019	CABLE HOOK	
34	227925	TOP MOTOR GASKET	
	205442	220V 2 STAGE D.I BYPASS ACUSTEK MOTOR (BL21102T) (MARKED 230V) TCO	
	205441	120V 2 STAGE D.I BYPASS ACUSTEK MOTOR (BL21101)	
35	227115	TOGGLE	
36	202031	BOTTOM MOTOR GASKET	
37	227922	BOTTOM MOTOR HOUSING	
38	219369	No8 X 1 INCH LONG POZI PAN STAINLESS STEEL PLASTITE SCREW	
39	207109	12 INCH FILTER (DOUBLE BOTTOM) 160GRM SMS	
40	207011	FLOAT CAGE GASKET	
41	225083	FLOAT ASSEMBLY GASKET	
42	220235	FLOAT GROMMET	
43	225087	FLOAT CAGE SUPPORT	
44	206026	POLYPROP BALL	
45	225086	FLOAT CAGE	
46	207055	GAUZE FILTER	
47	227065	FLUID CONTAINER ASSEMBLY	
48	206493	WET DRY CONNECTOR	
49	403039	BUCKET HANDLE	
50	208026	BUCKET HANDLE SPACER	
51	219282	M5 X 16MM LONG POZI PAN COUNTERSUNK SCREW	
52	325427	370 GREEN DRUM ASSEMBLY (SPARE PART)	
	325432	370 GREEN DRUM + FACE ASSEMBLY (SPARE PART)	
	325426	370 NUPRO BLUE DRUM ASSEMBLY (SPARE PART)	
	325417	370 NUPRO BLUE DRUM ASSEMBLY + FACE (SPARE PART)	
	325430	370 WHITE DRUM ASSEMBLY (SPARE PART)	
	325435	370 WHITE DRUM ASSEMBLY + FACE (SPARE PART)	
	325429	370 GREY DRUM ASSEMBLY (SPARE PART)	
	325434	370 GREY DRUM ASSEMBLY + FACE (SPARE PART)	
	250028	FUN FACE	
53	227398	GREEN THREADED NECK	
	227397	BLUE THREADED NECK	
	227346	GREY THREADED NECK	
	227395	BLACK THREADED NECK	
54	204111	50MM TWIN WHEEL CASTOR WITH PU TYRE	
55	227640	2 SHOT WHEEL ASSEMBLY	
56	227868	WHEEL HUB FOR 2 SHOT WHEEL	
57	219105	No8 X 5/8 INCH LONG POZI PAN PLASTITE SCREW	
58	227638	BLACK TRIM	
59	205443	230V 2 STAGE D.I BYPASS ACUSTEK MOTOR (BL21104T) (MARKED 230V) TCO	1

WARNING
 Seek guidance from Numatic team before use.
 Technical information supplied as guidance for use by suitably qualified personnel only.
 Numatic International Limited accepts no liability for misuse or negligence.