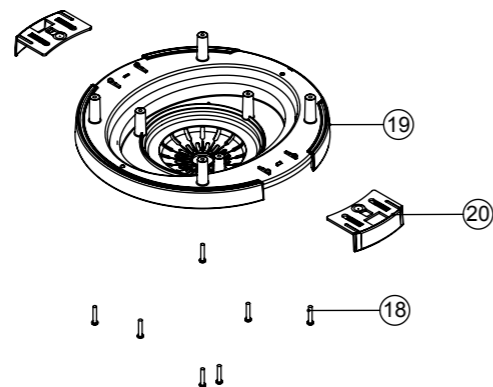
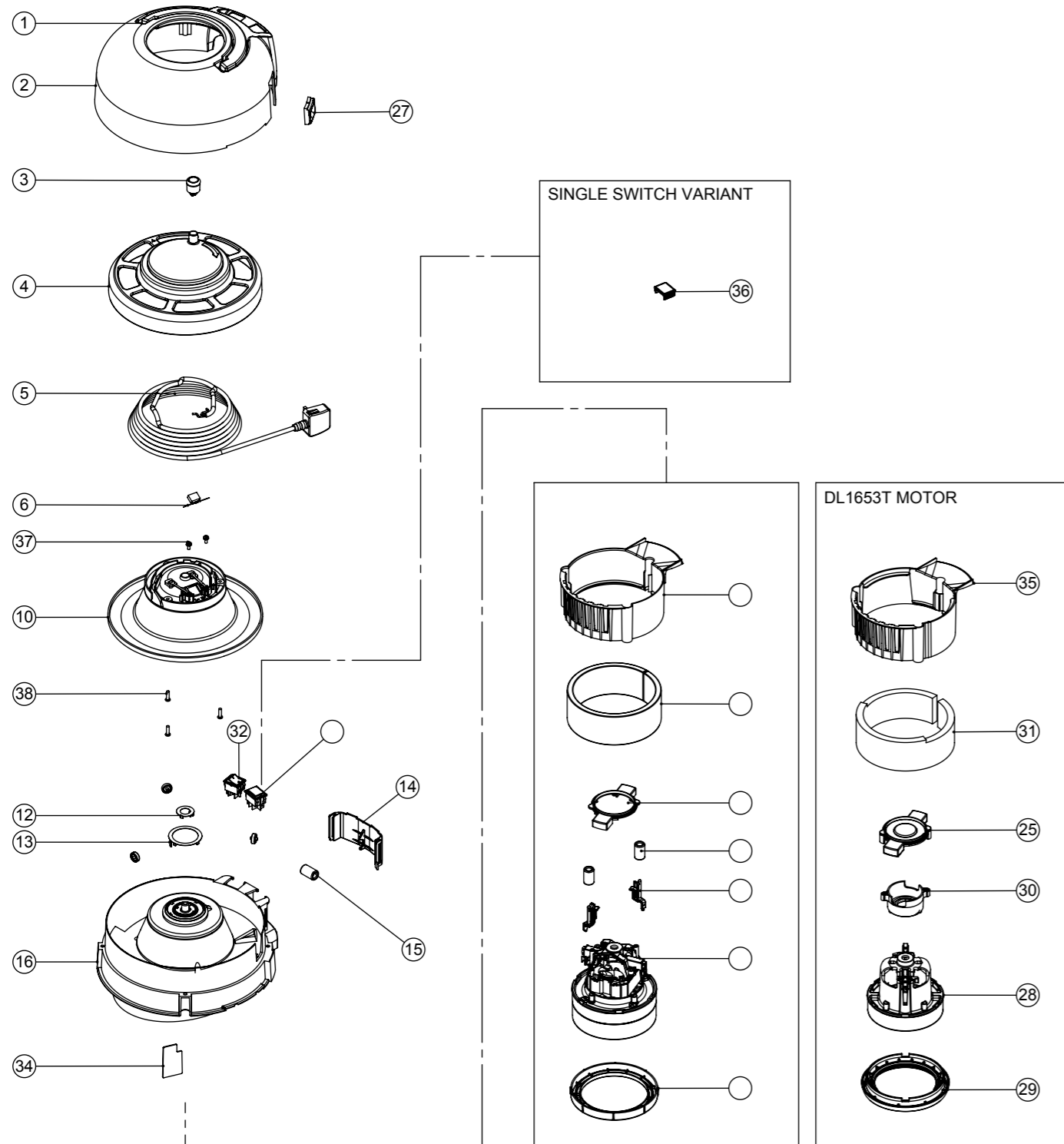


Numatic International Spare Parts

Model No: HEAD STYLE 1 ASSEMBLY 1/2-STAGE 1-SPEED EXPLODED

NA
DRAWING: DRW-16098 ISS:A01
09/01/2015

Models: HVR, HET 180-11 (181,182,183)



Numatic International Spare Parts

Model No: HEAD STYLE 1 ASSEMBLY 1/2-STAGE 1-SPEED EXPLODED

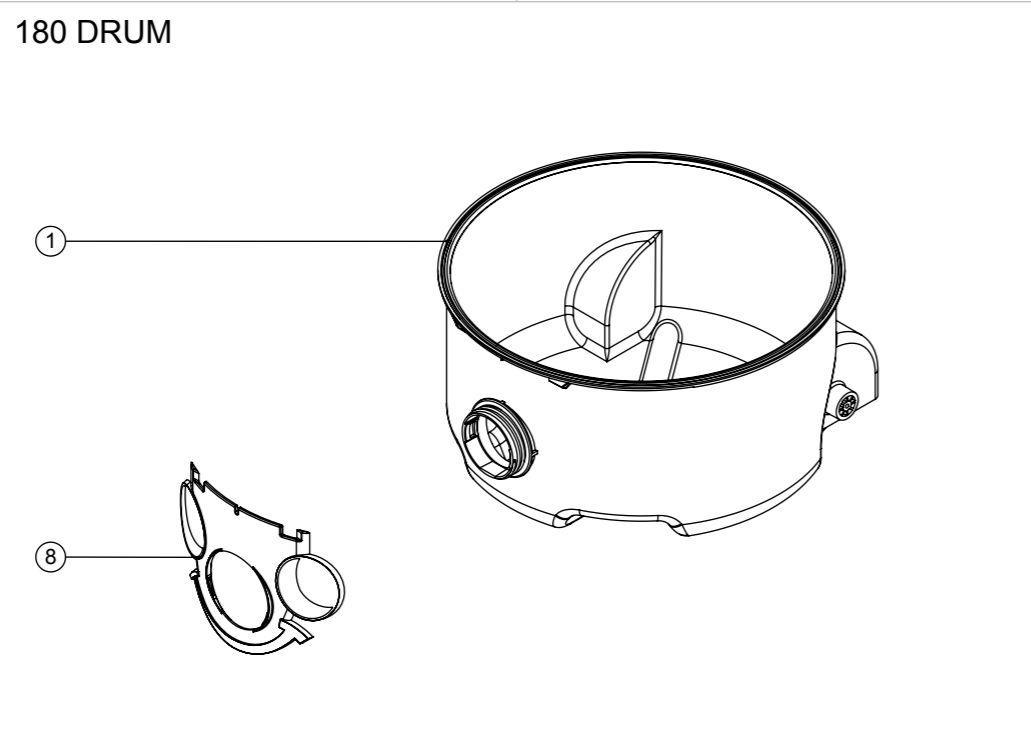
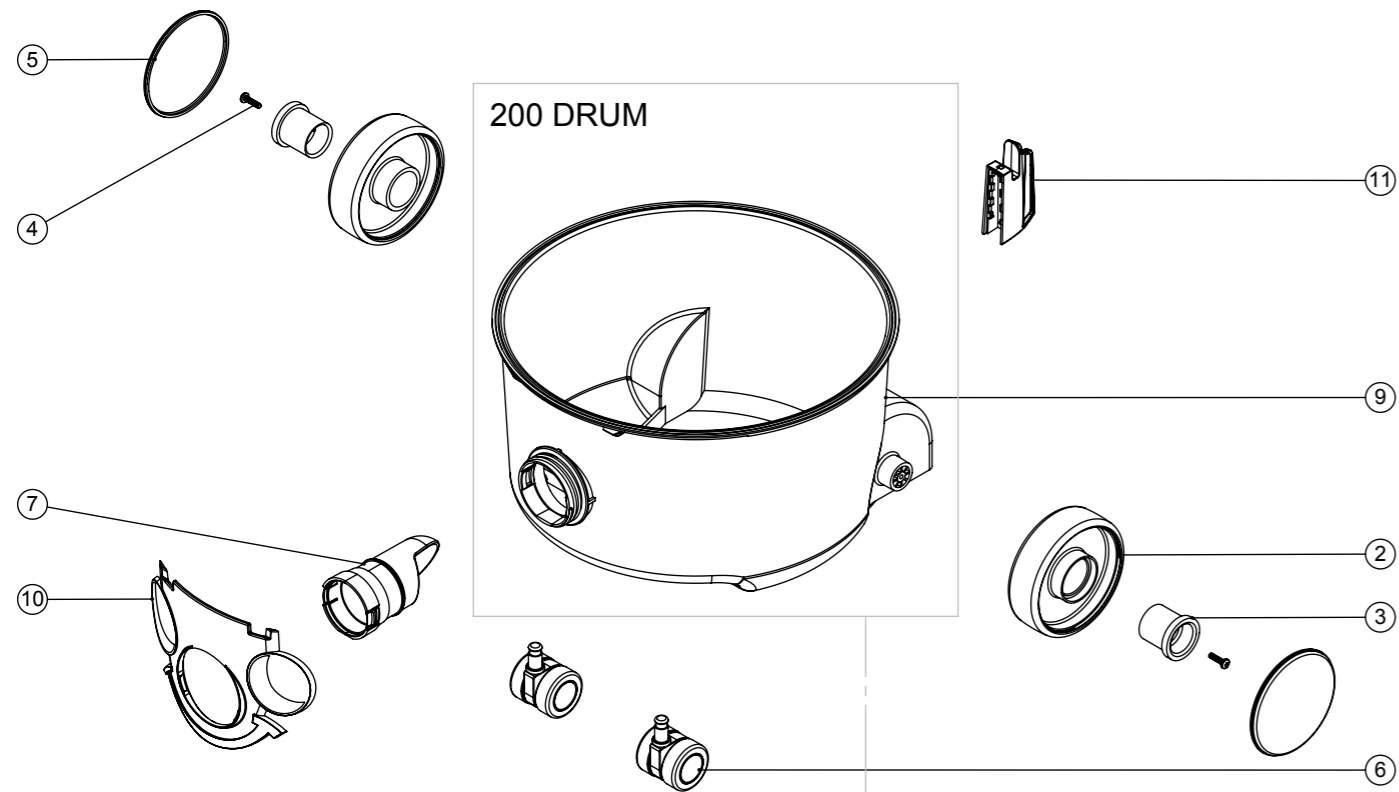
ITEM:	PART No:	Description	QTY.	COMMENTS:
1	227120	HANDLE - HVR/HET/NRV	1	
2	-	COVER	1	CONTACT NUMATIC FOR DETAILS
3	229617	CABLE REEL WINDER KNOB ASSY	1	
4	227133	CABLE REEL COVER	1	
5	236115	10.0MT X 0.75MM X 2 CORE (H05 V2V2-F) UK PLUG	1	CONTACT NUMATIC FOR MORE DETAILS IF REQUIRED
	236116	12.5MT x 1MM x 2 CORE (H05 V2V2-F) UK PLUG	1	
	236150	10.0MT x 1MM x 2 CORE (H05 V2V2-F) EURO PLUG	1	
	236151	12.5MT x 1MM x 2 CORE (H05 V2V2-F) EURO PLUG	1	
6	220937	SUPPRESSOR CAPACITOR ASSEMBLY WITH DISCHARGE RESISTOR	1	
7	227145	CONNECTING STRIP	2	
8	227103	CONTACT BUSH	2	
9	219009	M4 BRASS TAPPEX INSERT	2	
10	206491	CABLE REEL MOULDING	1	
11	208885	NEON INDICATOR (EVEREL, B71121G000000)	1	
12	227141	INNER CONTACT RING	1	
13	227142	OUTER CONTACT RING	1	
14	229623	SWITCH COVER	1	
15	230097	AXIAL FERRITE BEAD	1	NO FERRITES REQUIRED WITH DL1653T
16	229620	TOP MOTOR HOUSING	1	
17	227957	BLANKING PLATE	1	USED IN PLACE OF ITEM 35 WITH DL1653T
18	291082	#8 SCREW 1"L T20 PAN HEAD P/L THREAD FORMING	7	
19	237606	BOTTOM MOTOR HOUSING (BI-MATERIAL)	1	
20	229622	TOGGLE (BI-MATERIAL)	2	
21	237675	MOTOR GASKET 2 STAGE ECO	1	
22	205740	230V 2 STAGE 600W ECO THRO FLOW FAN MOTOR (DL2603T) TCO	1	
	205640	230V 2 STAGE 800W ECO THRO FLOW FAN MOTOR (DL2803T) TCO	1	
23	203020	POD SIDE FELT	1	
24	229621	AIR GUIDE	1	
25	229614	MOTOR PLATE BI -MATERIAL	1	
26	208955	CLIP RETAINER FERRITE BEAD (DL2 MOTOR)	2	
27	237687	BLACK CABLE ENTRY	1	
28	205840	MOTOR 600W (DL1653T) #063200462	1	
29	237089	BOTTOM MOTOR GASKET - CUP MOTOR	1	
30	237480	ADAPTOR MOTOR (DL1 603T)	1	
31	203038	POD SIDE FELT (DL1 TYPE)	1	
32	220582	GREEN ROCKER SWITCH (WHITE PRINT) 0-1	1	
34	208951	NOTCHED PCB BLANKING PLATE	1	
35	237674	AIRGUIDE (DL1 TYPE)	1	
36	237082	BLANKING PLUG - ROCKER SWITCH	1	USED IN PLACE OF ITEM 11 FOR 1 SWITCH VARIANT
37	291151	M4 X 10MM LONG T20 SEMS SCREW Z/PL - PRODUCT CODE 8.8 - TX20 HEAD	2	
38	291152	NO8. 1/2 INCH LG. T20. SCREW. Z/PL. PLASTITE	3	
39	227436	ROLLER WHEEL	3	

FOR WIRING DIAGRAMS PLEASE SEE DOC-21993 (REFER ONLY TO THE LATEST VERSION) OR NUMATIC WEBSITE

Numatic International Spare Parts

Model No: DRUM STYLE 1 - EXPLODED DIAGRAM

NA
DRAWING: DRW-15614 ISS:A01
23/12/2014



Numatic International Spare Parts

Model No: DRUM STYLE 1 - EXPLODED DIAGRAM

ITEM:	PART No:	Description	QTY.	COMMENTS:
1	-	180 PARALLEL DRUM	1	CONTACT NUMATIC FOR DETAILS
2	227640	2 SHOT WHEEL ASSEMBLY	2	
3	227868	WHEEL HUB FOR 2 SHOT WHEEL	2	
4	219105	No8 X 5/8 INCH LONG POZI PAN PLASTITE SCREW	2	
5	-	WHEEL TRIM	2	CONTACT NUMATIC FOR DETAILS
6	204000	40MM PU-TYRED BLACK TWIN WHEEL CASTOR	2	
7	237119	FRONT FIT BAG CONNECTOR	1	
8	-	PARALLEL SNAP FIT FACE PRINTED	1	CONTACT NUMATIC FOR DETAILS
9	-	200 DRUM	1	CONTACT NUMATIC FOR DETAILS
10	-	HENRY SNAP FIT FACE	1	CONTACT NUMATIC FOR DETAILS
11	237578	Wand Dock (Eco)	1	

COMPATIBLE FILTER BAGS - SEE DRW-15712 FOR DETAILS		
DESCRIPTION	ITEM NO.	QTY PER PACK.
NVM-1CH HEPAFLO DUST BAGS	604015	10